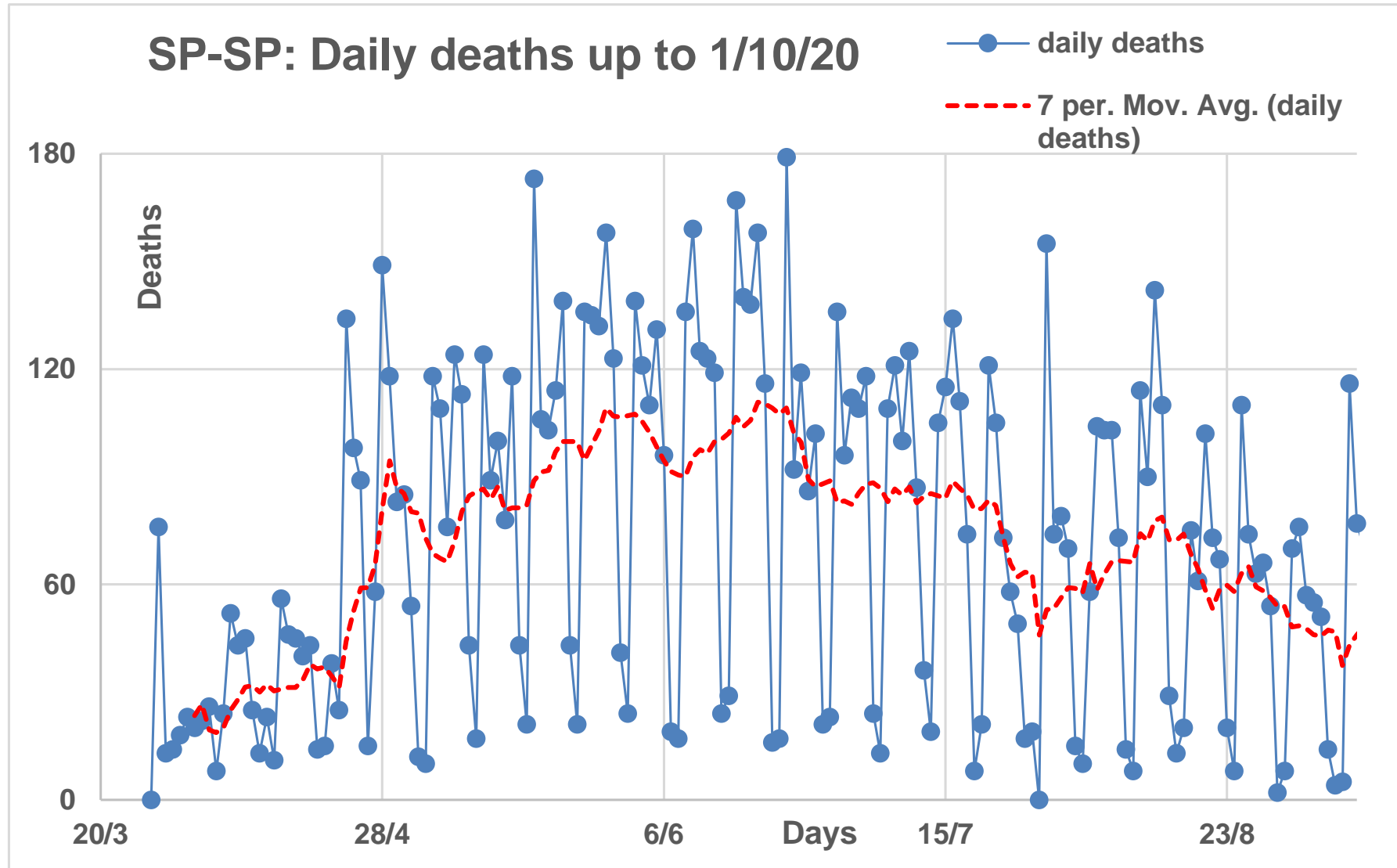


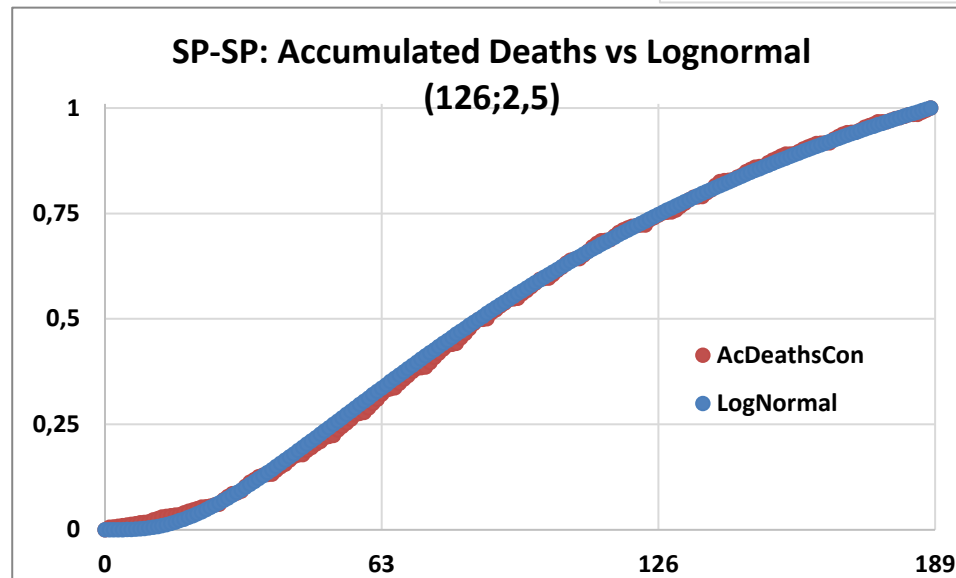
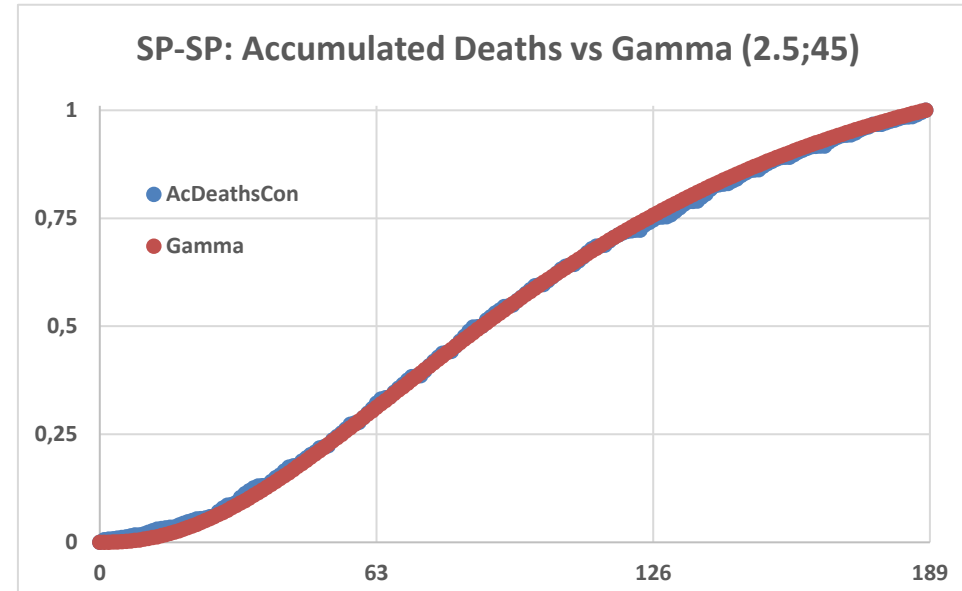
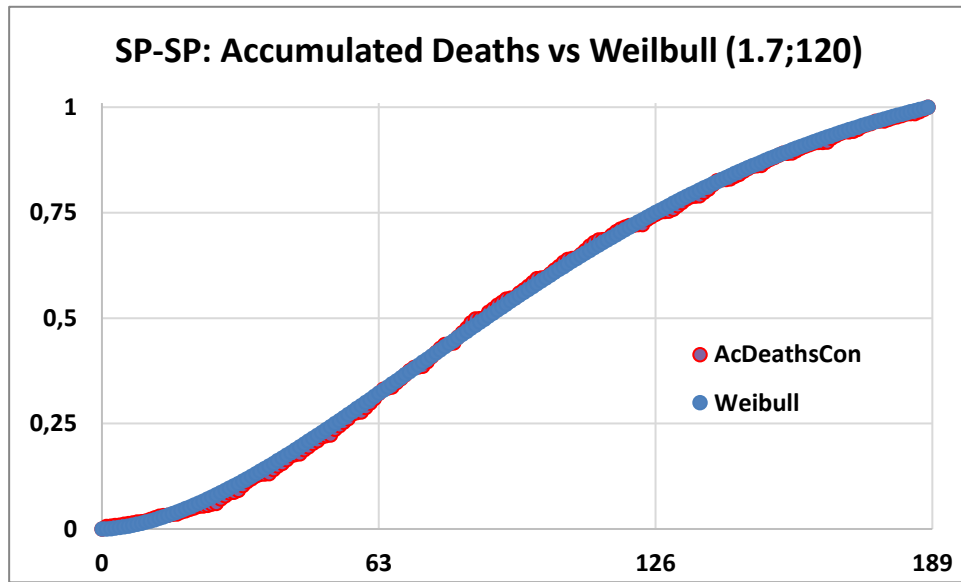
São Paulo, SP

Predictions

Observed deaths up to 1/10/20: 188 days




Model choice to São Paulo, SP Observed on 1/10/20

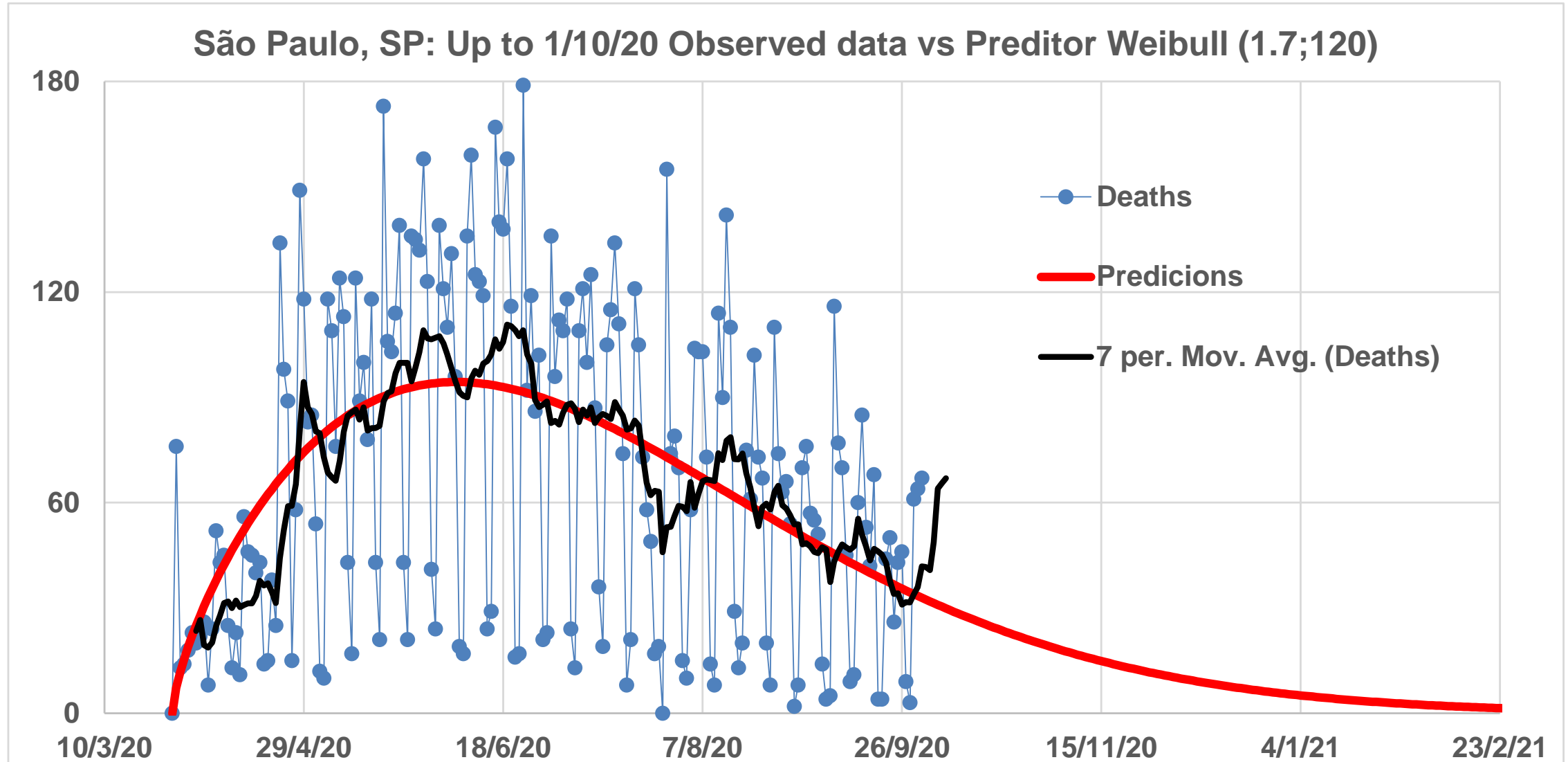


Aitchison Distance
Empirical vs Model Distributions

Gamma – 1.22: Weibull 1.03 &
LogNormal – 1.27


The chosen
predictor

Visual Quality of the predictions



Informative table

Relevant events	Data	Data Type	Daily	Accumulated
Estimated Peacks	6/6/20	Observed	96	4901
		Predicted	94	4919
		Freq. Estimated	33,62%	
	23/6/20	Observed	179	6583
		Predicted	92	6506
		Freq. Estimated	44.58%	
Last day observed for this study	1/9/20	Observed	67	12797
		Predicted	33	12812
		Freq. Estimated	88.40%	
End of 2020	31/12/20	Predicted	6	14277
		Freq. Estimated	98,39%	
Half of next year - 2021	31/7/21	Predicted	0	14510
		Freq. Estimated	99,17%	